



Friday, November 20, 2015 - 6:00 PM
Community Church Assembly Room, 40 East 35th Street, Manhattan

The Route of the Rocket by Tom Rinaldi



Ancient "Rocket boats" along the Ganges, as seen above, will be the subject of Tom Rinaldi's November program.

(Tom Rinaldi)

On Friday, November 20th, WSS-PONY member Tom Rinaldi will present photographs and impressions from the "Route of the Rocket." The Ganges-Brahmaputra Delta of Bangladesh is home to what may be the last traditional side wheel riverboats in regular commercial service anywhere on Earth. Here where waterborne transport is still a necessary fact of life, a fleet of four ancient Scottish-built paddle wheelers continues to function as a vital part of the region's transportation infrastructure. Known as the "Rocket boats," some of these vessels have been in service for nearly 90 years. Though converted from steam to diesel propulsion in the 1990s, these relics of the British Raj have changed little over the years, leaving them to provide an incredible window into a time when riverboats like these were common all over the world.

NEXT EVENTS: Holiday Celebration, Saturday, December 5 (location and details TBA)

ADDRESS: PO Box 384, New York, NY 10185-0384

E-MAIL: wsspony@gmail.com

WEBSITE: www.worldshipny.com

MEMBER PHOTO OF THE MONTH



SEA PRINCESS at New York, July 2015.

(Mario De Stefano)

MUSEUMS, LECTURES AND HARBOR CRUISES

CONTACT THESE INSTITUTIONS BY EMAIL OR PHONE FOR CURRENT EVENTS AND ADDITIONAL INFORMATION:

SOUTH STREET SEAPORT MUSEUM www.southstreetseaportmuseum.org or 917-492-3379.

MYSTIC SEAPORT www.mysticseaport.org or 860-572-0711.

VANCOUVER WSS & VANCOUVER MARITIME MUSEUM www.worldshipsocietyvan.ca for information or if you visit, contact Glenn Smith: 604-684-1240, email glenn.smith@worldshipsocietyvan.ca. Next meeting: Wednesday, November 11.

NEW SOUTH WALES WSS: Meetings are held at the Uniting Church Complex in Lord Street, Roseville. Contact the branch at PO Box 215, Strathfield, New South Wales 2135, Australia for additional information.

THE NATIONAL LIBERTY SHIP MEMORIAL, INC. www.ssjeremiahobrien.org or liberty@ssjeremiahobrien.org or 415-544-0100. 1275 Columbus Avenue, Suite 300, San Francisco, CA 94133-1315.

PROJECT LIBERTY SHIP www.liberty-ship.com or 410-558-0164.

NEW YORK WATER TAXI, www.nywatertaxi.com or 866-989-2542. Harbor cruises departing from both South Street Seaport Pier 17 and Pier 84 at West 44 Street. Hop on – hop off service throughout New York Harbor is offered as well. Contact via website or telephone for departure times and prices.

CIRCLE LINE DOWNTOWN, www.circlelinedowntown.com or 866-989-2542. Harbor cruises on the ZEPHYR from April to December, and aboard New York Water Taxi from January to March, departing from Pier 17, South Street Seaport.

CIRCLE LINE, www.circleline42.com or 877-731-0064. Circle Manhattan and other harbor cruises, departing from pier 84 at West 44 Street.

NEW YORK WATERWAY, www.nywaterway.com or 800-533-3779. Trans-Hudson ferry service and special-event cruises.

THE NATIONAL LIGHTHOUSE MUSEUM www.lighthousemuseum.org or 855-656-7469. Contact for schedule of cruises and events.

THE WORKING HARBOR COMMITTEE www.workingharbor.com or 212-757-1600. Cruises to both remote and well-travelled parts of New York Harbor - the Hudson River to view tugboat races, Gowanus Bay and Erie Basin in Brooklyn, and a circumnavigation of Staten Island.

THE NOBLE MARITIME COLLECTION, www.noblemaritime.org or 718-447-6490. Maritime lectures and art exhibits at the Sailor's Snug Harbor Cultural Center on Staten Island, NY.

LIBERTY SCIENCE CENTER www.lsc.org or 201-200-1000. The center, located in Liberty State Park in Jersey City, NJ, has just opened a new exhibit, "Titanic: The Artifact Exhibition," which will run until May 30, 2016. The exhibit focuses on the dramatic stories of the TITANIC's passengers.

THE PROPELLER CLUB OF NY & NJ, www.propellerclubnynj.org, 147 E. 37th Street, New York, NY, 10016. Sunday November 15: Jazz Brunch Cruise, Cruise departs Pier 40, North River, Manhattan at 12:00 noon on the HORNBLOWER, and will last about 2 hours. Price: \$40 without Mimosas, \$50 with unlimited Mimosas. Thursday, December 10: William Fox will give a talk on his new book, "St. James River."



Fall fun afloat! The propeller Club of New York & New Jersey has organized a brunch aboard the HORNBLOWER HYBRID, on Sunday, November 15. (Hornblower Cruises & Events)

ARRIVALS AND DEPARTURES

SHIP	FROM	TO	VOYAGE	PASSENGER(S)	DATE
QUEEN MARY 2	Southampton	New York	Transatlantic	Ted & Suellyn Scull	06/15
AZAMARA JOURNEY	Venice	Istanbul	E. Mediterranean	Charles & Marjorie Zuckerman	06/15
AZAMARA QUEST	Athens	Dubai	Suez Canal	Charles & Marjorie Zuckerman	10/15
REGAL PRINCESS	New York	New York	New Eng & Canada	Mario De Stefano & Carol Miles	10/15
REGAL PRINCESS	New York	New York	New Eng & Canada	David Hume & Marjorieann Matuszek	10/15
QUEEN MARY 2	Southampton	New York	Transatlantic	Ted & Suellyn Scull	11/15

SHIP'S LOG - October

Over 100 members and friends celebrated the 50th Anniversary of WSS PONY with a wonderful luncheon at the historic Pier A, near Battery Park in Manhattan. Members were also treated to excellent illustrated talks by Ted Scull and Bill Miller on the recent history of the Port of New York and New Jersey, and on the Society's first 50 years. A detailed review will of the event will be featured in the special December Anniversary Issue of The Porthole.



Bill Miller, center foreground, chats with members Charles Howland and Frank Trumbor at the WSS PONY 50th Anniversary luncheon. (Stuart Gewritzman)



Pier A, the 1886-built fireboat facility, was the spectacular venue for WSS PONY's 50th anniversary celebration.

(Stuart Gewritzman)

CARL KRANCKE

Long-time WSS PONY member Carl Krancke passed away last summer. We extend our sympathies to his family and friends.

WHAT DAY IS TODAY?

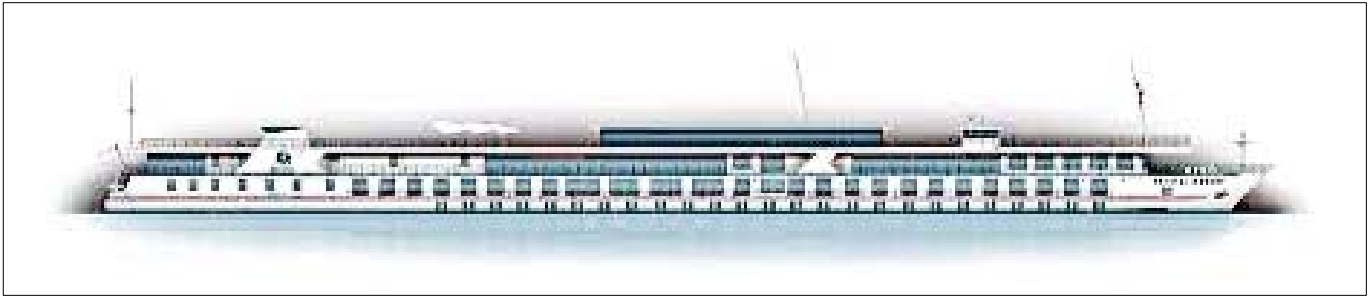
You won't have to ask if you buy a WSS PONY 2016 Anniversary Calendar! Featuring 13 stunning ship photos from our own superb maritime photographers, this calendar can be yours for only \$10. Pick one up at the November 20 membership meeting, or request one by email: WSSPONY@gmail.com.

TIME TO RENEW!

Membership renewal forms are included with this month's issue of The Porthole. Don't miss any of our great monthly programs and special activities - mail your renewal today!

SHIP NEWS

MUSICAL CRYSTAL: Crystal Cruises followed their recent massive expansion announcement with another surprise. Encouraged by loyal passenger response, Crystal purchased the 160-passenger German river vessel MOZART - Europe's largest - which will be refurbished and renamed CRYSTAL MOZART. This will enable the deluxe operator to enter the river cruise market in July 2016, a year earlier than originally planned. Crystal has also doubled the size of their order for newly built vessels, from two to four. Two of the new riverboats will accommodate 84 passengers, and two will accommodate 110, enabling them to operate on rivers with different navigational capabilities. All accommodations will be suites, and an entire deck will be devoted to luxurious public areas. To be named CRYSTAL BACH, CRYSTAL MAHLER, CRYSTAL RAVEL and CRYSTAL DEBUSSY, these eagerly anticipated vessels will begin cruising European waterways in mid-2017.



The river cruise vessel MOZART, formerly operated by Peter Deilmann Cruises, will be renovated and reintroduced as Crystal River Cruises' CRYSTAL MOZART in summer, 2016. (Crystal Cruises)

QUANTUM SUCCESS: Royal Caribbean's QUANTUM OF THE SEAS Class has apparently been a huge success. The line has contracted for a fifth vessel in the series, as yet unnamed. The 168,666-ton QUANTUM Class vessels carry approximately 4,180 passengers and a crew of 1550. Deployment has not been decided for the new vessel, scheduled for completion in fall 2020.

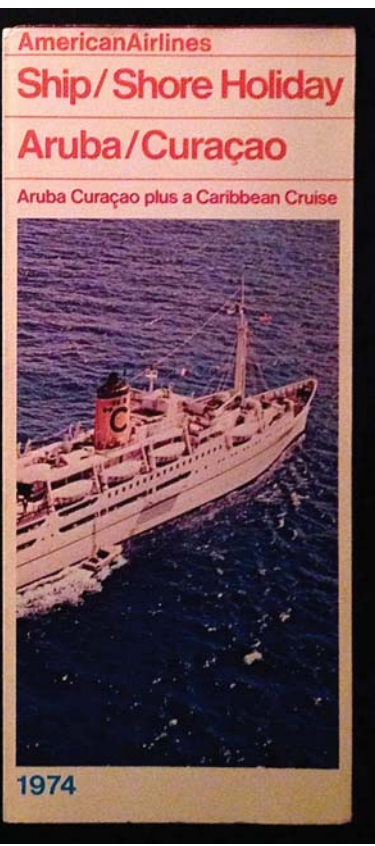
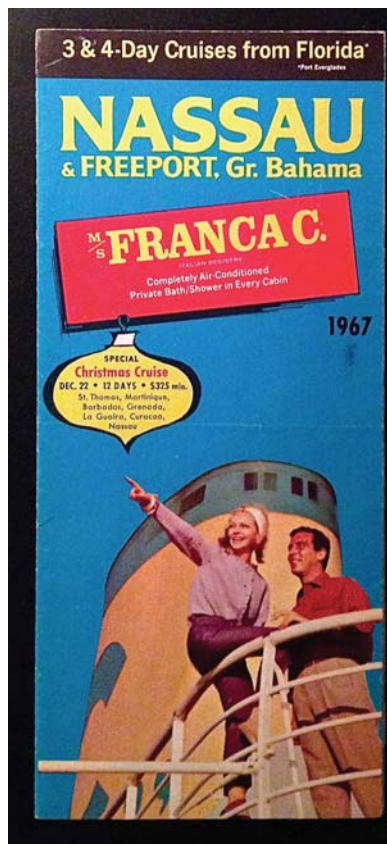
DOULOS PHOS TO BECOME HOTEL: The 1914-built DOULOS PHOS, one of the oldest passenger ships in the world, is to become a hotel on the Indonesian island of Bintan. In fact, she will literally be on the island – reports indicate that she is currently being moved onto dry land, where she will remain and conversion to a 100-room hotel will take place. The 101-year-old ship was originally the Mallory Line freighter MEDINA, built in Newport News, VA. Rebuilt as an emigrant liner in 1948, she emerged as Naviera San Miguel's ROMA, and operated on various routes until her owners went bankrupt in 1952. Auctioned off to Costa Line, she was renamed FRANCA C and was re-engined with Fiat diesels. After operating between Genoa and the Caribbean, Costa rebuilt her as a deluxe cruise ship in 1957, with private facilities in all cabins and décor by the most famous maritime architects and artists of the day. After 20 years' service (and another set of Fiat diesels), FRANCA C was sold to German owners, and became the floating bookstore and Christian missionary ship DOULOS (Greek for servant). Amazingly, she continued in this role until 2009, at which time repairs and modifications necessary for SOLAS compliance were just too costly. She was sold to Singapore interests and renamed DOULOS PHOS (servant of light) in 2010, miraculously escaping the scrapyard. The hotel conversion project, 5 years in development, was originally planned for Singapore but the Indonesian site is just a one-hour ferry ride away. Hopefully the project will reach a successful conclusion, preserving a remarkable old ship for future generations to enjoy.

DEUTSCHLAND RISES LIKE A PHOENIX: The unique German liner DEUTSCHLAND, built by now-bankrupt Peter Deilmann Cruises, will be returning to service for part of 2016. Currently operating as the floating school ship WORLD ODYSSEY, she has been chartered by Phoenix Reisen, the German travel company and cruise operator. Northern European itineraries are planned from May to September, after which the vessel will revert to her floating university role.



The elegant German liner DEUTSCHLAND, seen in her future Phoenix Reisen colors.

(Phoenix Reisen)



FRANCA C brochures from her days as a deluxe cruise ship in the 1960's and 1970's. (Costa Line / Bob Allen collection)

OFFICERS

Chairman: Marjorieann Matuszek
 Vice Chairman: David Hume*
 Branch Secretary: Greg Fitzgerald
 Membership Secretary: Mario De Stefano
 Treasurer: Carol Miles*

EXECUTIVE BOARD

Bob Allen
 Mario De Stefano
 Greg Fitzgerald
 Stuart Gewirtzman
 David Hume
 Marjorieann Matuszek
 Carol Miles*
 Doug Newman
 Ted Scull*

COMMITTEE HEADS

Finance: Carol Miles
 Membership: Mario De Stefano
 Newsletter: Bob Allen
 Program: Greg Fitzgerald
 Special Events: David Hume*
 Website: Stuart Gewirtzman * Past Chairman